

New: HAMACHER HA-LSA 4A QUICK-ACTION CONNECTOR

HAMACHER has modified its quick-action connector for routing of lines into explosion-proof housings, tried and proven over many years, but retaining the entry gland element in the housing. Type approval to Directive 94/9/EC (ATEX) has, of course, been obtained for the new HA-LSA 4A.

Essential features:

- ◆ *Plug-in type cable guidance for quick and easy on-the-spot assembly and for possible pre-fabrication*
- ◆ *Use of hose-type cable normal in mining, with outer sheaths in rubber or plastic, with 19 to 25 mm cable diameters*
- ◆ *Entry gland for screw-mounting on housing wall available with Pg 29 or M 40 x 1.5*

Technical data:

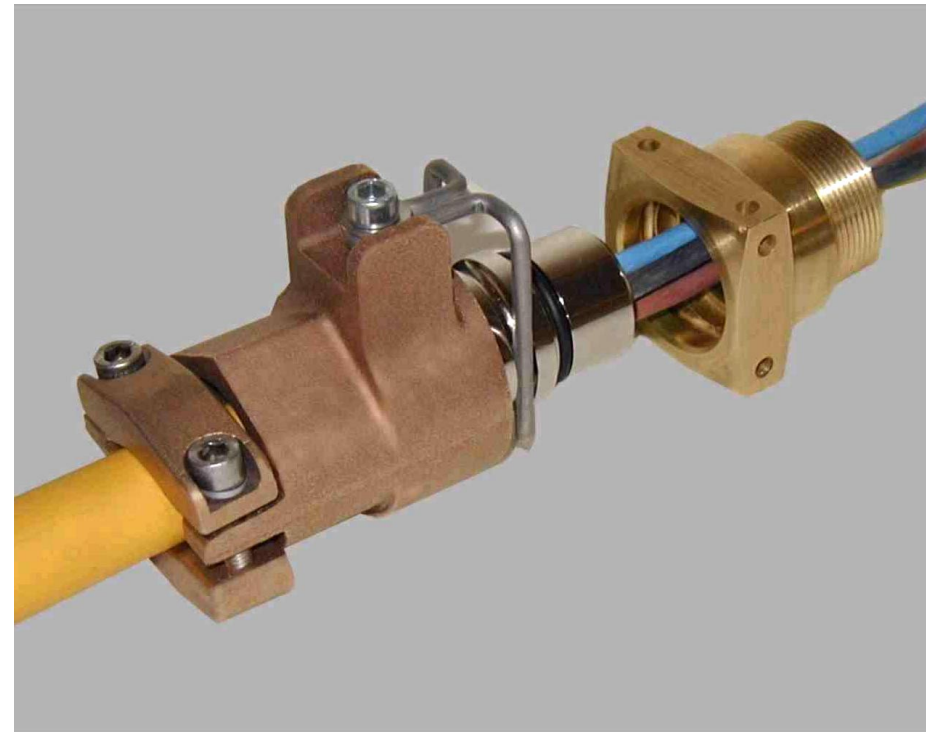
- | | |
|---|-----------------------------|
| ◆ <i>Installation length in entry gland</i> | <i>97 mm</i> |
| ◆ <i>Diameter, max .</i> | <i>70 mm</i> |
| ◆ <i>Internal seal diameter</i> | <i>19,21,23,25 mm</i> |
| ◆ <i>Temperature range</i> | <i>-20 ... 90°C</i> |
| ◆ <i>Type of protection</i> | <i>I M2 EExde I ; EExdI</i> |
| ◆ <i>Degree of protection</i> | <i>IP 66</i> |

Certification:

*IBExU01ATEX1006X
KDB Nr 01.E.116U*

Ordering data:

- | | |
|------------------------------------|----------------------------|
| ◆ <i>Type HA-LSA 4A (19)</i> | <i>Art.-No.: HA-109409</i> |
| ◆ <i>Type HA-LSA 4A (21)</i> | <i>Art.-No.: HA-109401</i> |
| ◆ <i>Type HA-LSA 4A (23)</i> | <i>Art.-No.: HA-109402</i> |
| ◆ <i>Type HA-LSA 4A (25)</i> | <i>Art.-No.: HA-109403</i> |
| ◆ <i>Entry gland for HA-LSA 4A</i> | <i>Art.-No.: HA-E13103</i> |



The end of the stripped cable leading into the housing is positioned in the anti-kink device, the correct size of seal and trust ring are slipped on, and the anti-kink element is screwed to the nipple element. The anti-rotation fork is used for securement once the cable has been inserted into the entry gland.