

NEW GENERATION OF EXPLOSION-PROOF ENCLOSED LUMINAIRES: HA-DL

Hamacher GmbH – with its many years of experience as a manufacturer of luminaires for use in explosion-endangered zones, such as mines, for example - has now developed, tested and launched a new, explosion-proof enclosed luminaire - with type approval to Directive 94/9/EC (ATEX), naturally.

Technical features:

- ◆ *Compact-type fluorescent lamps with high light output in a range of two to six explosion-proof domes*
- ◆ *Impact-resistant polycarbonate covers for optimum spatial illumination*
- ◆ *Switch disconnecter for isolation when changing bulbs*
- ◆ *Simple bulb-changing thanks to easy plug-in design*
- ◆ *All components such as gap surfaces etc., in corrosion-proof material*
- ◆ *Flexible luminaire adaptation thanks to flange system*
- ◆ *Connection via Hamacher-230 V plug connector or Hamacher quick connection system*
- ◆ *Simple optional fitting of reflectors*



HA-DL 12



HA-DL 13



HA-DL 14



HA-DL 16



HA-DL 25

Technical data:

- ◆ *Rated voltage:* 230 V¹⁾
 - ◆ *Nominal current per bulb:* 67 mA
 - ◆ *Luminaire output:* 13 W
 - ◆ *Power factor λ :* 0,9
 - ◆ *Attachable conductor section:* up to 10 mm²
 - ◆ *Ambient temperature max.:* 40° C
 - ◆ *Width without / with reflector:* 110 mm /156 mm
 - ◆ *Height with reflector:* 163 mm
- 1): 127 V coming soon!

Degrees of protection:

- ◆ *Type of protection:* IM2 EExdI ; EExdI
- ◆ *Degree of protection:* IP 65

Certification:

IBExU01ATEX1005 X
KDB Nr 01.E.118X

Types:

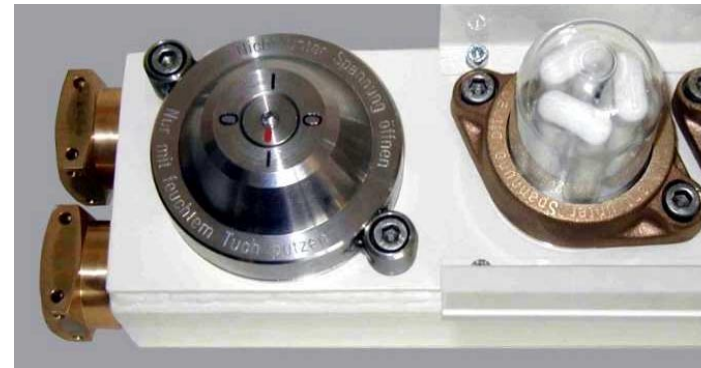
The connecting terminals are located underneath the switch flange on the HA-DL 1... series.

On the HA-DL 2... series, the connecting compartment is covered by a large blind flange and the switch flange is located in the position normally occupied by the first bulb.



The explosion-proof domes can easily be removed after pressing of the switch disconnecter and slackening of the bolts.

The compact-design fluorescent lamps located underneath are mounted on a plug-in plinth and can therefore easily be replaced.



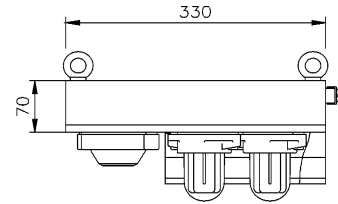
HA-DL 1... series.



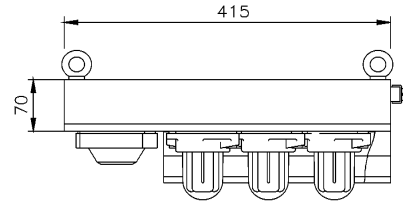
HA-DL 2... series.

HA-DL luminaire types:

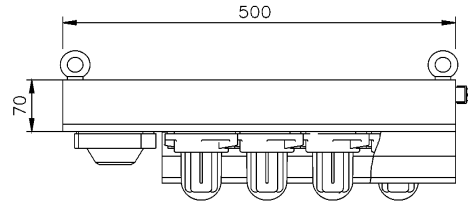
HA-DL 12 : 2 x 13 W; ca. 8.5 kg



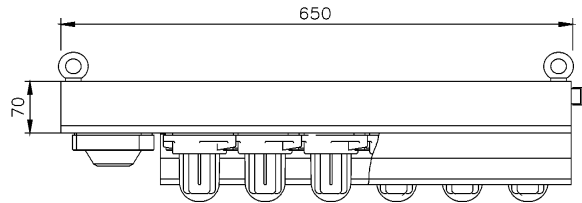
HA-DL 13 : 3 x 13 W; ca. 10.5 kg



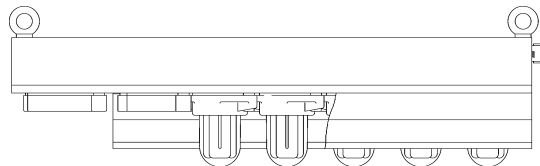
HA-DL 14 : 4 x 13 W; ca. 12.5 kg



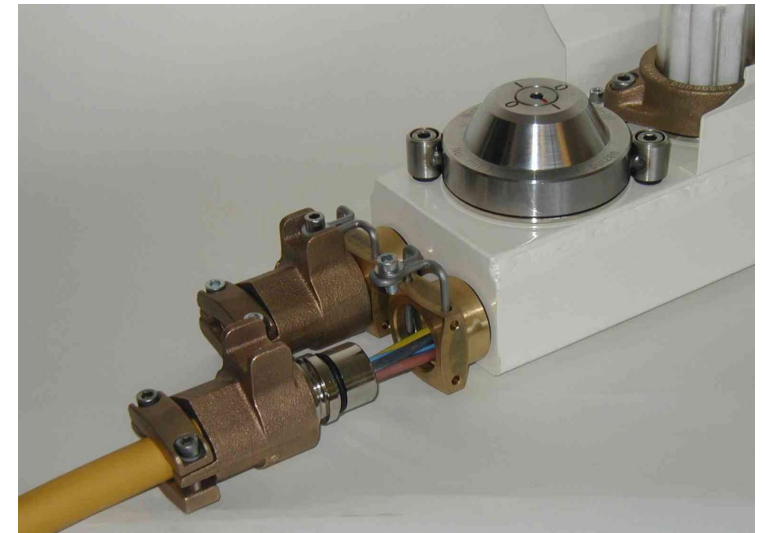
HA-DL 16 : 6 x 13 W; ca. 16.5 kg



HA-DL 25 : 5 x 13 W; ca. 16.0 kg



HA-DL 1... with HA-SV... socket attachments



HA-DL 1... with HA-LSA 4A... quick-action connector